



Global
**Engineering Design
Project Management**
Company

ori-occi
industrial associates





ORI-OC CI
Industrial Associates
Pvt. Ltd.

ENGINEERING CONSULTANCY

One stop center for

Integrated Engineering Solutions

established in 2013



OIL & GAS



PETROCHEMICALS



CHEMICALS



POWER



PHARMACEUTICALS



WATER

ori-oc ci
industrial associates

Who We Are



Leading Engineering Design and Project Management Consultancy Firm, Offering Expertise Services to Global Clients in Oil & Gas, Petrochemicals, Chemicals, Power, Water and allied sectors with Extensive & Diverse Experience in Both Green Field and Brown Field Projects

📌 Services:

- Project Management, Engineering Design, Instrument Design Manufacture & Supply, Process Skid & Modular Fabrication.

📍 Locations:

- Project Management & Engineering Design Center in Mumbai, India.
- Instrument Design, Manufacture & Supply Center in Mumbai, India.
- Process Skid & Modular Fabrication Center in Mumbai, India.
- Establishing an office in the UK & UAE is crucial for enhancing the value of our engineering services, ensuring proximity to key clients & markets, and facilitating seamless collaboration with international partners. So we have Sales & Project Coordination Centers, at United Kingdom (UK) and United Arab Emirates (UAE).

📌 Value Proposition:

- Wide range of services across the project cycle with complete value chain of multidisciplinary engineering expertise.
- Low-cost engineering benefits
- Understanding and fulfilling customer needs efficiently



**INTEGRATED
ENGINEERING
SOLUTIONS**

What Do We Stand For



Mission

Our mission is to **engineer excellence** through innovative designs, economical and sustainable client-centric solutions that optimise efficiency, enhances productivity, and drive growth for customers, with a focus on quality, integrity and continuous improvement



Vision

Our vision is to be the global leader in engineering, recognised for our expertise, performance, and **commitment to excellence**



Values

- **Excellence**
- Integrity
- Innovation
- Customer Centric
- Sustainability
- Accountability
- Diversity
- Adaptability

Engineering Excellence Empowering Futures



Sectors & Services



Sectors



Oil & Gas



Petrochemical



Chemicals



Power



Pharmaceuticals



Water

Services

- ⚙ Pre-bid Engineering Support
- ⚙ Feasibility Study
- ⚙ Conceptual Design
- ⚙ Pre-FEED / FEED
- ⚙ Detailed Engineering
- ⚙ Project Management Services (PMC)
- ⚙ Engineering, Procurement & Construction Management (EPCM)
- ⚙ Advance Engineering Solutions
- ⚙ Plant Digitalisation
- ⚙ As Built Documentations
- ⚙ Instruments Supply
- ⚙ Skid / Modular Fabrication
- ⚙ Talent Staffing Assistance



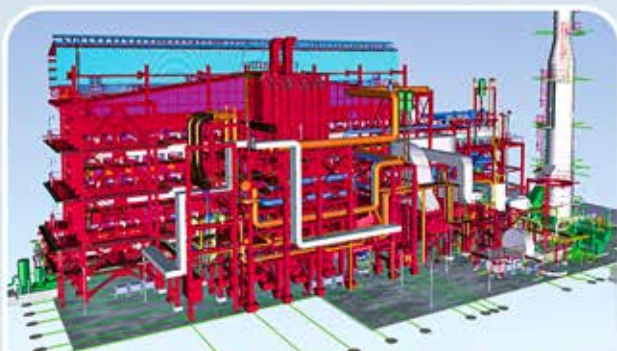
Projects



Additional Crude Storage Tank



Produced Water Treatment Package



Petrochemical Reformer Package



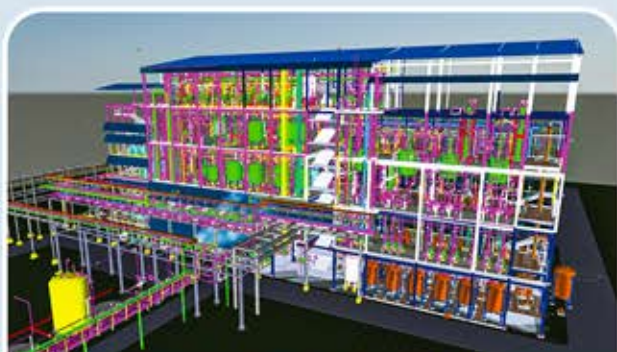
Utility (N2) Generation Package



Refinery DM Plant



Power Plant WWTP



Intermediate Chemical Plant



Pharma API Unit



ORI-OCCI mobilises qualified professionals with adequate experience for effective Project Management & Control by taking care of Quality, Time, Cost and Safety. This helps the clients to effectively manage the complexities of their projects, optimize resources, mitigate risks, and achieve their project objectives efficiently and cost-effectively.

Project Management Services to optimize the Project's Development & Delivery

- Project Planning Management
- Detailed Engineering
- Risk Management
- Procurement / Contract Management
- Project Execution & Monitoring
- Quality Assurance & Control
- HSE Management
- Cost Management & Budgeting
- Communication & Reporting
- Handover & Closure

Project Management Cycle

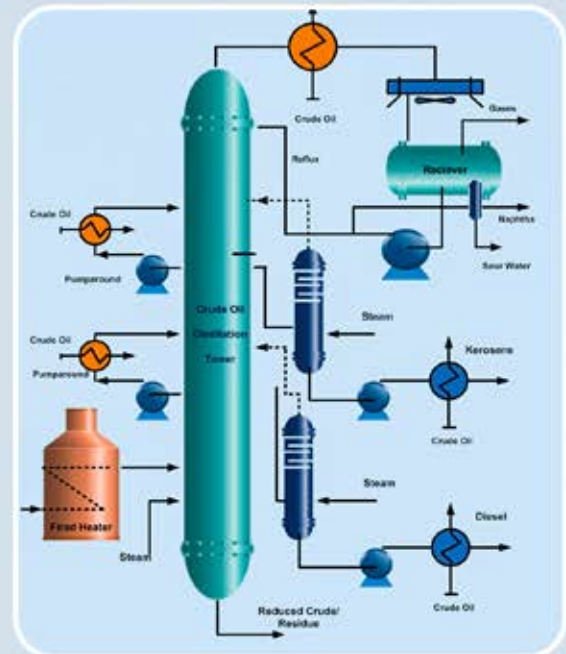


Engineering Capabilities



Process Engineering

- Process Design Basis
- Process Studies
- Process Simulation
- Process Flow Diagram (PFD)
- Utility Flow Diagram (UFD)
- Process & Instrumentation Diagram (P&ID)
- Process Data Sheets (PDS) for Instrument
- Process Design Package Preparation
- Heat & Mass Balance
- Pressure Safety Valve Calculations
- Surge Analysis Study
- Process Calculations for Relief System Sizing



Piping / Mechanical Engineering

- Piping Design Basis
- Plot Plan / Equipment Layout
- Preparation of Technical Specifications
- Field Engineering Support & As Built
- Piping GA Drawings & Isometrics
- Equipment Fabrication Drawings
- Modular Skid Arrangements
- Construction & Demolition Plans
- Material Take Off
- Piping Stress Analysis
- Design & Specification of Static Equipment.
- 3D Modelling of Piping Systems & Equipments



Engineering Capabilities



Civil / Structural Engineering

- Civil & Structural Design Basis
- Detailed Engineering & Drawings for Civil Works
- Detailed Fabrication Drawings for Structure
- Design & Analysis of Foundations & Structure
- Dynamic Structural Analysis
- 3D Modelling of Civil Foundations & Steel Structures



Instrumentation Engineering

- Instrument Design Basis
- Instrument Specifications & Data Sheets
- Instrument I/O List
- Hook-up & Installation Drawings
- Panel Design & PLC Engineering
- 3D Modelling of Cable Trays & Instruments



Electrical Engineering

- Specifications for Electrical Equipment
- GADs for Switchyards & Substations
- Diagram & Drawings for Power & Illumination
- Cathodic Protection System Specifications
- Load List, Cable Schedules, Lighting Panel, etc.
- 3D Modelling of Cable Tray & Electrical Equipments

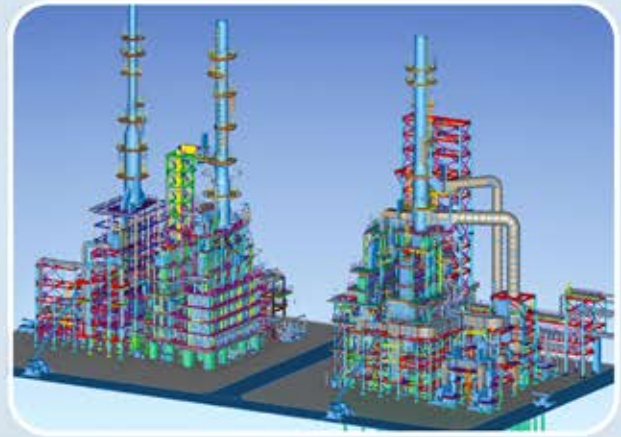


Advance Engineering Solutions



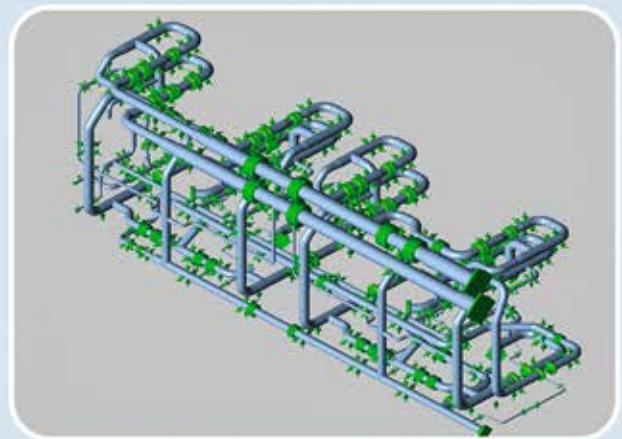
Designing & 3D Modelling

3D modelling of industrial plants using specialised softwares is a crucial aspect of modern engineering and construction processes. It involves creating digital representations of plant facilities, thus reducing errors & reworking at construction site. ORI-OCCE have a qualified team of engineers & designers who can generate real-time walk-through digital model, providing a thorough understanding of the facilities before the construction begins.



Piping Stress Analysis

Piping Stress Analysis is a crucial aspect of the design of Piping Systems, helping to ensure its safety, reliability & compliance with regulatory requirements. It requires expertise in structural mechanics, fluid dynamics, material science, and relevant engineering codes & standards. Our team of experienced engineers excels in evaluating the structural integrity of piping systems under various operating conditions, identifying potential risks, and offering robust solutions to mitigate them.



Structural Analysis

Structural analysis is a fundamental aspect of engineering that involves assessing the behavior and response of structures to various loads and environmental conditions. It is a systematic process used to evaluate the integrity, stability, and safety of a structure. The primary goal of structural analysis is to ensure that structures can withstand anticipated loads without experiencing deformation, stress, or failure.

By applying advanced analysis techniques, adhering to industry standards, and prioritizing safety and reliability, We ensure that structures meet performance requirements and withstand the demands of their intended service life.



Advance Engineering Solutions



Skid / Modular Engineering

Modular / Skid Engineering is a design approach that involves breaking down complex systems or products into smaller, manageable modules / skids or components. Each module serves a specific function and can be designed, developed, tested and maintained independently. These modules can then be assembled or integrated to create the final system.

ORI-OCCI, takes pride in delivering innovative & tailored services that redefine efficiency & scalability in Modular / Skid Engineering.

Our holistic approach to Modular / Skid Engineering, encompasses design, fabrication, assembly, testing & installation



Reverse Engineering

Reverse Engineering thru Laser Scanning technology is extensively used in the industry for a variety of purposes, owing to its ability to capture precise three-dimensional data quickly & accurately into point clouds. This raw point cloud data can then be transformed into a 3D output format which becomes the foundation for design, documentation, visualisation, and analysis of the existing facilities, including refineries, processing plants, offshore platforms, pipelines, storage tanks, etc. This documentation is crucial for as-built information, asset management, plant modification & expansion, etc. The captured 3D data serves as a foundation for further design, engineering, and construction activities, ensuring that new installations seamlessly integrate with the existing facility / plant layout. It also helps in minimizing errors, thereby reducing project timelines and costs.

ORI-OCCI offers cutting-edge Reverse Engineering thru Laser Scanning Services. With our advanced technology and skilled



professionals, we accurately capture point cloud data of existing facilities and develop them into 3D Models, drawings, documents, etc. Our precise data capture, comprehensive documentation, and customised solutions ensure efficient project execution.

Clientele / End Users



Locations



Contact Us

 www.oiapl.com

 business@oiapl.com

 +91-9892436100 | +44-7553252278 | +971-565017957

